



SPECIFICATION

Round Towel Bar shall be fabricated of stainless steel alloy 18-8, grade 304. Shelf posts shall be 13mm x 25mm rectangular tubing with formed mounting flange and bracket welded on end. Bar shall be 19mm diameter and shall be held in receiver holes in support posts. Mounting plates shall be included and shall be 18 gauge. Stainless steel setscrews shall be provided on bottom perimeter of flanges to lock unit to mounting plates. Surface finish shall be bright or satin as chosen by option and indicated by code suffix. Length shall be as chosen from schedule and indicated by code suffix.

STANDARD STOCK SIZES

Length	Model	
	Bright	Satin
457mm	10-7355-B18	10-7355-S18
610mm	10-7355-B24	10-7355-S24
760mm	10-7355-B30	10-7355-S30

INSTALLATION

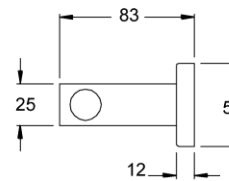
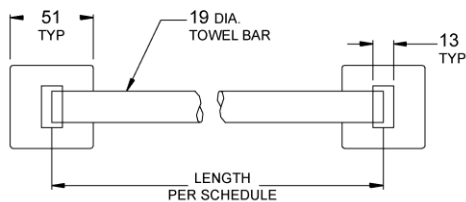
Surface mount unit on wall using No. 10 self tapping screws (supplied by others) through holes provided in mounting plates into suitable prepared mountings (supplied by others) or other suitable mounting hardware (supplied by others) to suit wall conditions. Hang post and flange assemblies on mounting plates with bar captured and tighten setscrews to lock unit to plates. For mounting height standards refer to current Building Code of Australia for able bodied and/or disabled use.

Round Towel Bar shall be Model No. 10-7355-Bxx (bright finish) or 10-7355-Sxx (satin finish) as supplied by ASI JD MacDonald.

WARRANTY

One year.

All ASI JD MacDonald disabled compliant products when installed must be in accordance with AS1428 to ensure the specified product is complying with all washroom specification requirements.



CONCEALED MOUNTING DETAIL

